

ARIA M SLAVE FRONT DOOR (1922)

INNER DOOR (1923)

PUSH ARIA SLAVE DOOR ASSEMBLY (1924)

CABINET AND COMPONENTS OF COMPLETION (1925)

FIXED PUSH + SENSORS ASSEMBLY (1911)

NUOVO CASSETTO PLS - PARTI A COMPLETAMENTO (2886)

COMPONENTI CASSETTO PRODOTTI (2855)

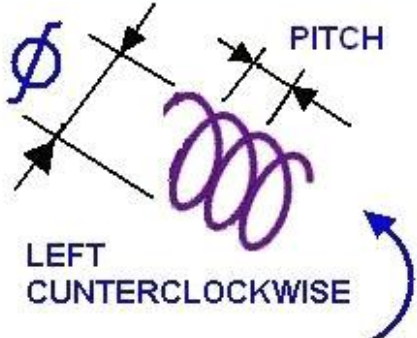
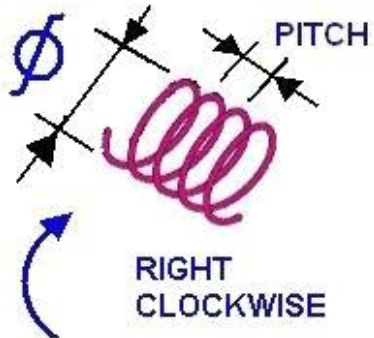
PLS DRAWERS GUIDES (1926)

ARIA M SLAVE COOLING GROUP ASSEMBLY (1927)

ARIA SLAVE ELECTRIC BOX ASSEMBLY (1928)

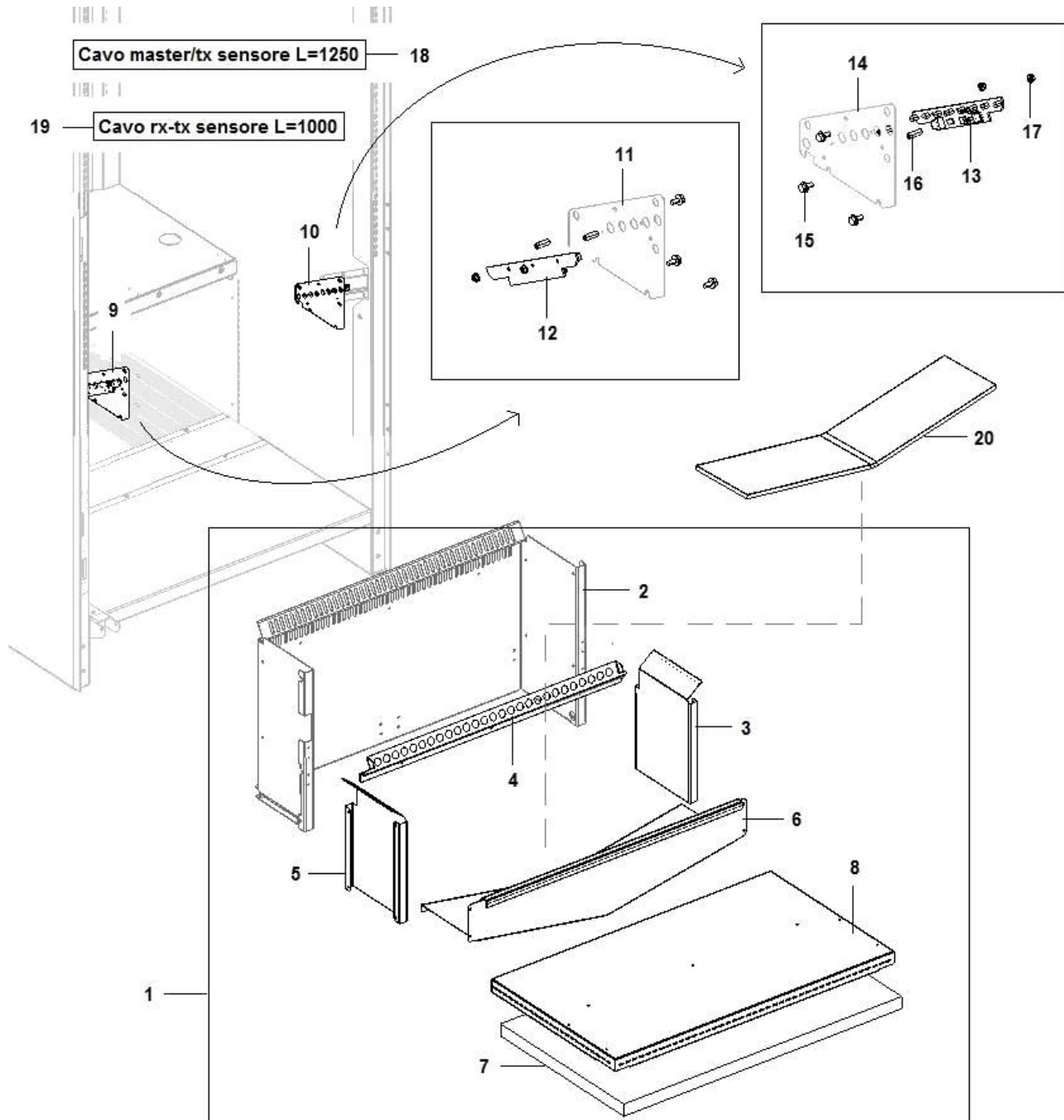
SPIRAL LAYOUT (139)



					
		ROT.	ϕ	PITCH	N. PROD.
1	•	RIGHT	80	45	10
2	•	RIGHT	68	35	13
3	•	RIGHT	68	45	10
4	•	RIGHT	68	30	16
5	•	RIGHT	80	81	5
6	•	RIGHT	80	22	21
7	•	RIGHT	68	60	7
8	•	RIGHT	68	22	21
9	•	RIGHT	68	94	5
10	•	RIGHT	80	37	12
11	•	RIGHT	68	77	6 bot/can
13	•	RIGHT	68	22	21 splitter
14	•	LEFT	68	45	10
15	•	LEFT	68	60	7
16	•	LEFT	68	77	6 bot/can
17	•	LEFT	80	22	21
18	•	LEFT	68	94	5
19	•	LEFT	68	35	13

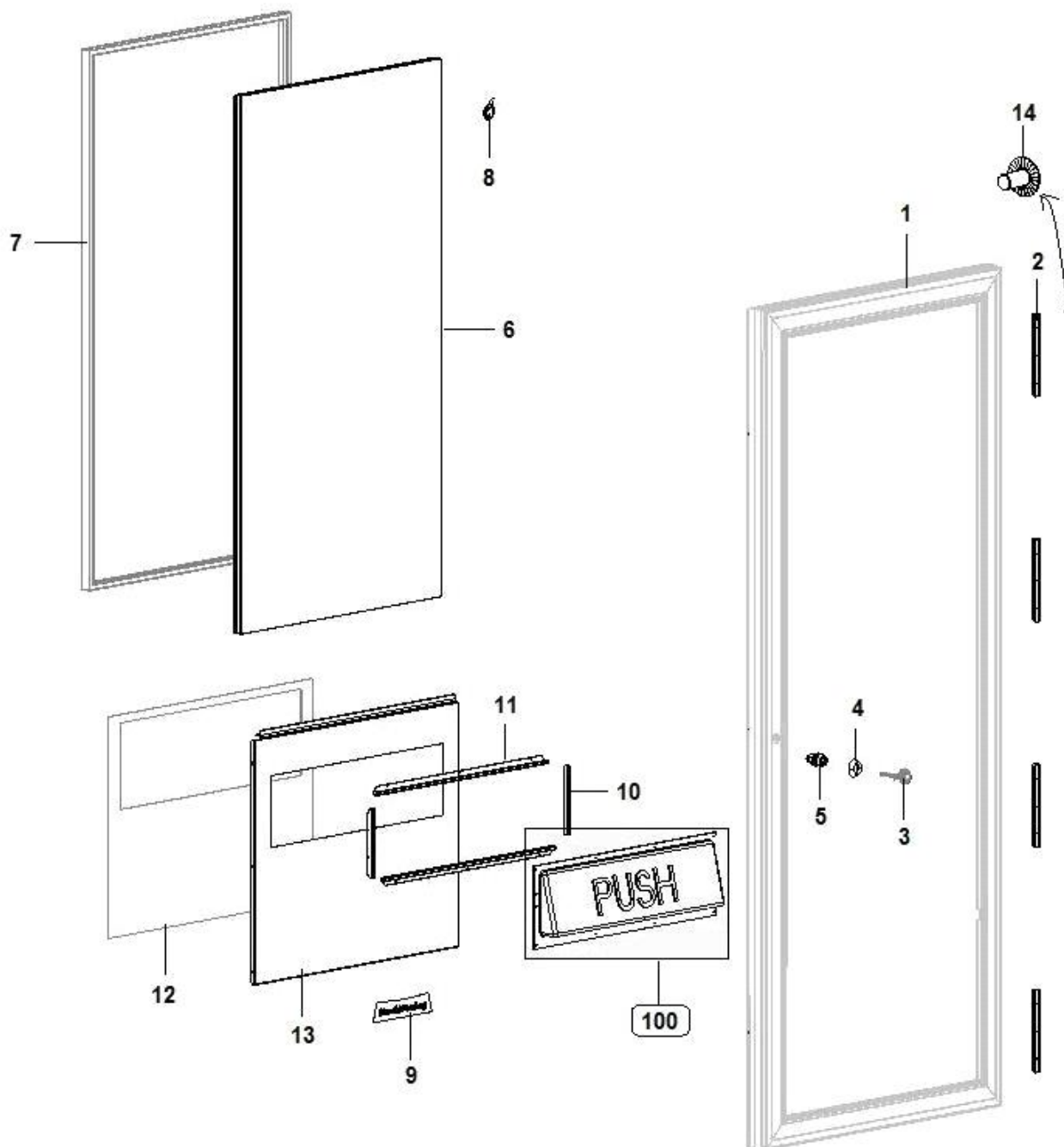
Pos.	Code	Description
0001	07018211-01L16	Ø 80 right spiral - 45 pitch
0002	07018111-01L16	Ø 68 right spiral - 35 pitch
0003	07018311-01L16	right spiral(diam.68 pitch45)
0004	07018511L16	Ø 68 right spiral - 30 pitch
0005	07020011-01L16	Ø 80 right spiral - 81 pit
0006	07020311L16	Ø 80 right spiral - 22 pitch
0007	07018911L16	Ø 68 right spiral - 60 pitch
0008	07018811L16	Ø 68 right spiral - 22 pitch
0009	07021111L16	Ø 68 right spiral - 94 pitch
0010	07018711-01L16	Ø 80 right spiral - 37 pitch
0011	07019311L16	Ø 68 right spiral - 77 pitch
0013	07024211L16	RT spiral D= 68 Pitch 22 w/rod
0014	07019811-01L16	Ø 68 left spiral - 45 pitc
0015	07019611L16	Ø 68 left spiral - 60 pitch
0016	07019511L16	Ø 68 left spiral - 77 pitch
0017	07021011L16	Ø 80 left spiral - 22 pitch
0018	07021211L16	Ø 68 left spiral - 94 pitch
0019	07021611-01L16	Left spiral D= 68 Pitch 35 VEGA

FIXED PUSH + SENSORS ASSEMBLY (1911)



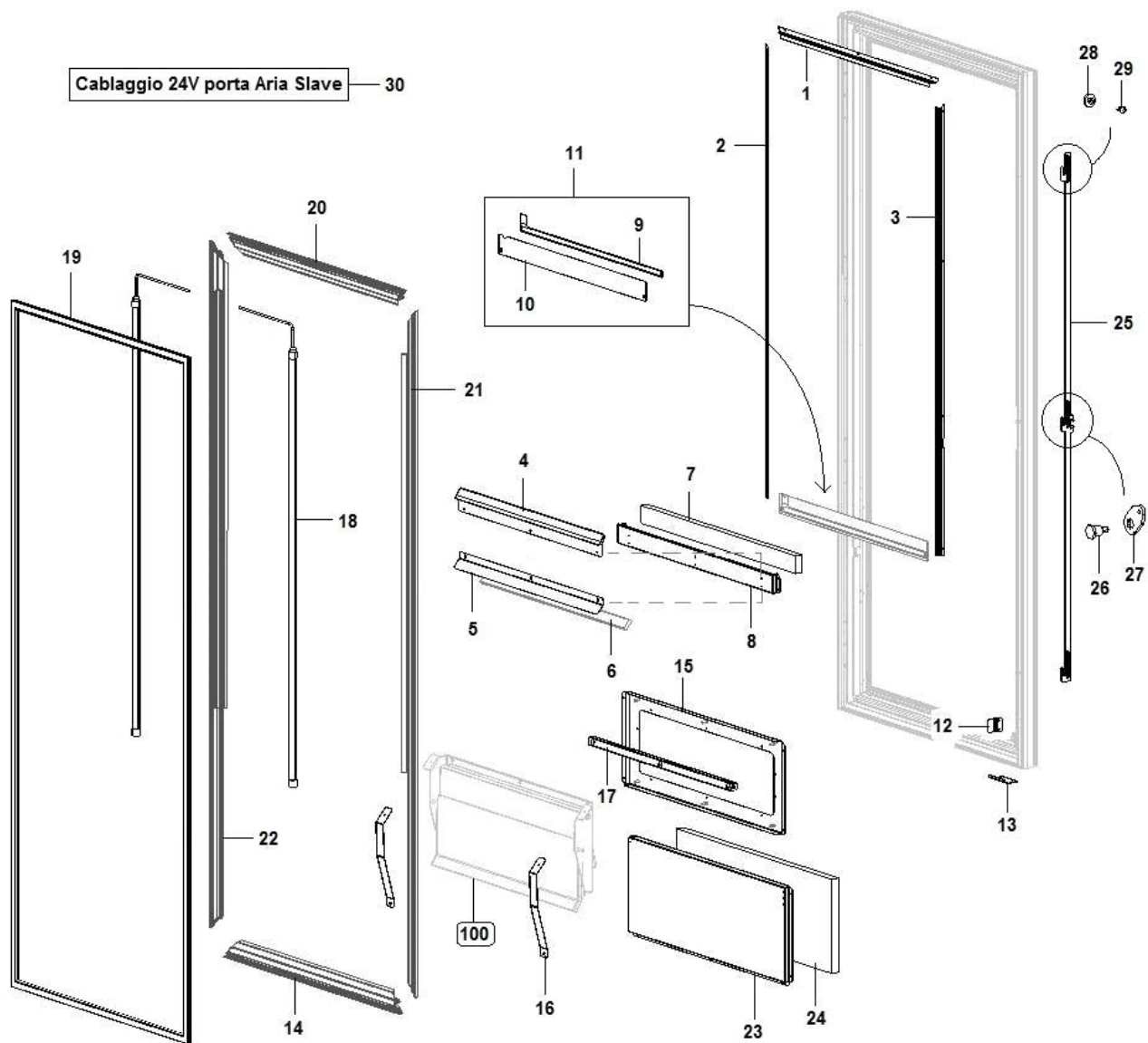
Pos.	Code	Description
0001	06293322	BV676 SLAVE silver product exit assy
0002	06293621-01ZNC	VANO RACCOLTA PRODOTTO ARIA SLAVE
0003	06294721P77	LAMIERA SCIVOLO DX PUSH ARIA SLAVE
0004	06200321P77	BLOCCO PARATIA ANTIV. ARIA SLAVE
0005	06294731P77	LAMIERA SCIVOLO SN PUSH ARIA SLAVE
0006	06292911-01ZNC	PIANO INCLINATO PUSH ARIA SLAVE
0007	17388421	POLISTIROLO INF. PUSH 360X625X25 ARIA SL
0008	06293221ZNC	LAM. RIPIANO COIB. BASAMENTO ARIA SLAVE
0009	06293110-01	VISTA LT sensor assy
0010	06293010-01	VISTA LT sensor assy
0011	06294311-01P77	CARTER SENSORI SX ARIA SLAVE
0012	26049626	rx sensor board
0013	26049526	tx sensor board
0014	06294211-01P77	CARTER SENSORI DX ARIA SLAVE
0015	32050416	M4x8 screw
0016	19141416	L= 10 card spacer
0017	34115216	M3 hex. nut with washer
0018	22174722	Master/TX cable sensor L= 1250
0019	22174622	CAVO RX-TX SENSORE L= 1000mm
0020	08042711	SPUGNA SCIVOLO VANO ARIA SLAVE

ARIA M SLAVE FRONT DOOR (1922)

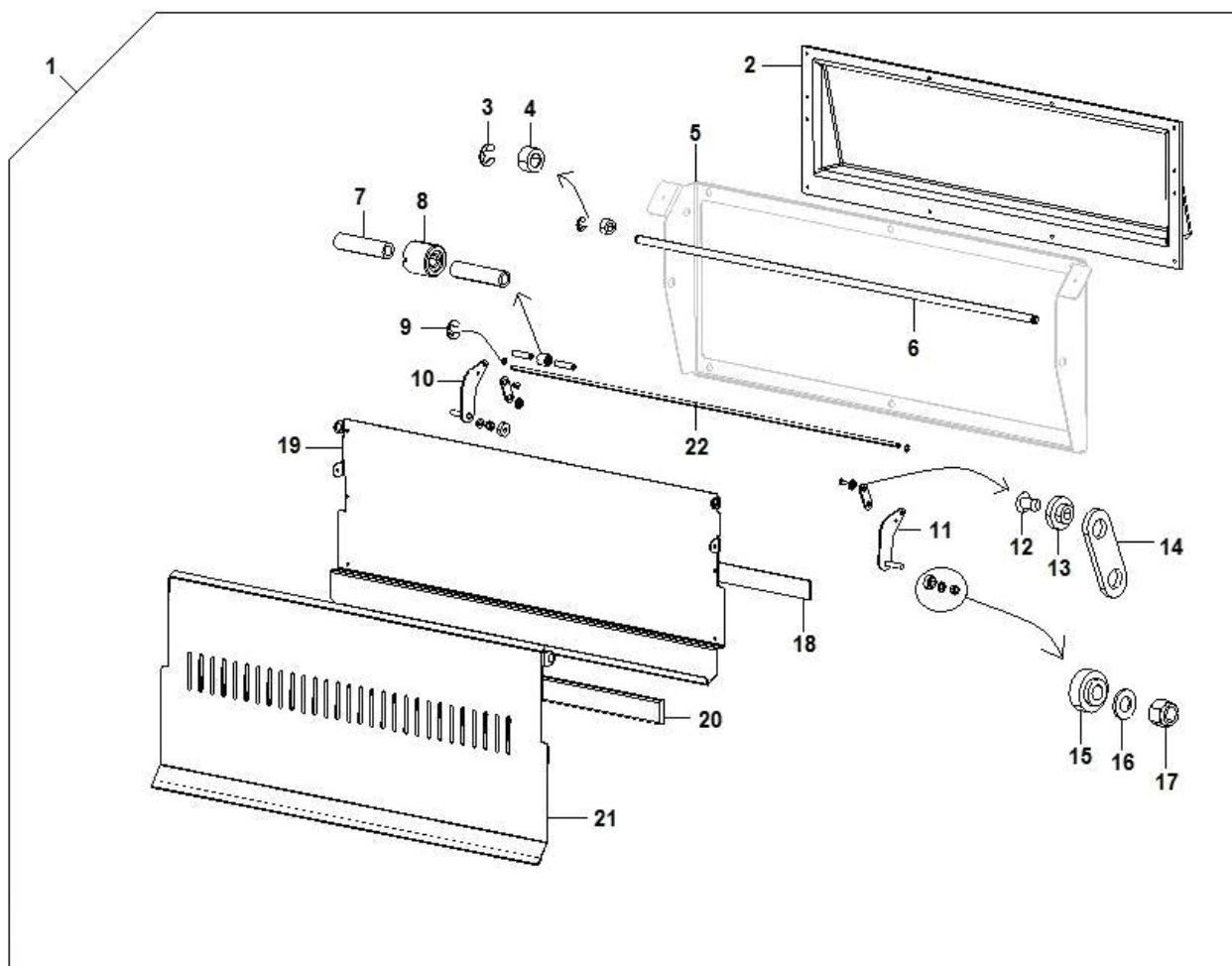


Pos.	Code	Description
0001	21087010-01A01	ASSIEME TELAIO PORTA ARIA M SLAVE
0002	21070011	CERNIERA AD ALI L150
0003	41029836	Rielda's lock key EMK handle
0004	19126511	Lock protection
0005	21058936	RIELDA 538 LT lock w/out lever
0006	05335611	ARIA M SLAVE glass door
0007	05335711-01	coin recovery frame black
0008	30298311	ADESIVO PITTOGR. VETRINE 2015
0009	30298211-01	ADESIVO WORDMARK ARIA 2015
0010	05300811M09	Product exit frame L.130
0011	05120435-01	CORNICE VANO-PROD V-850 NERA
0012	08040011	Product exit sponge absorber
0013	06292611P09	BVM 671 CPU board support
0014	19141411	lock rod screw

INNER DOOR (1923)

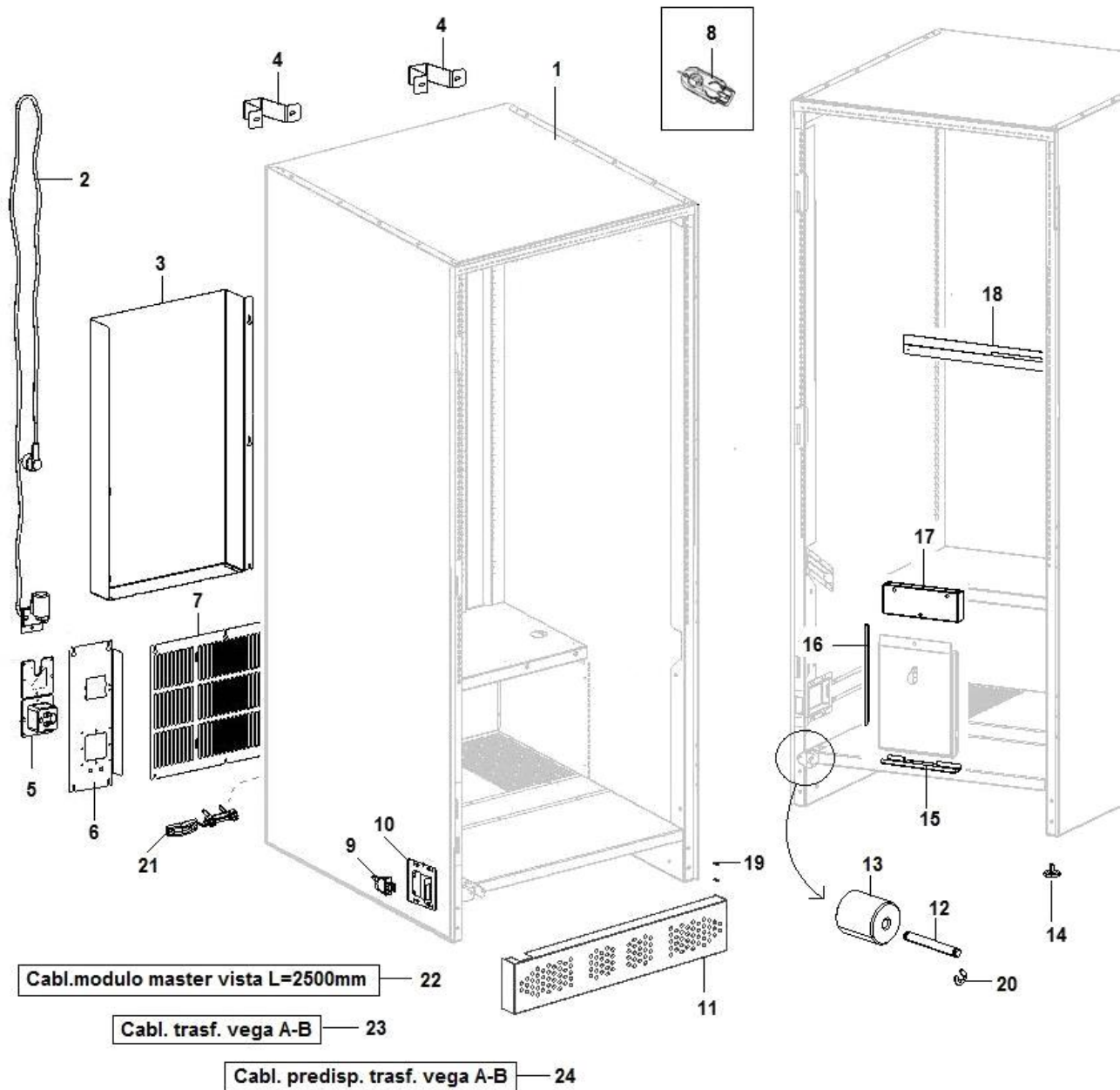


Pos.	Code	Description
0001	06292811-01ZNC	FERMAVETRO SUPERIORE ARIA SLAVE
0002	06295311ZNC	FERMAVETRO VERT.LATO CERN.ARIA M SLAVE
0003	06295211ZNC	FERMAVETRO VERT. LATO SERRATURA
0004	06243711-01P77	BVM 671 CPU board support
0005	06289011P77	CARTER DEFLETTOR PUSH SUPERIORE
0006	08012213	gasket 25x8
0007	17388511	POLISTIROLO CARTER SUPERIORE PORTA
0008	06294611P77	CARTER INFERIORE PUSH ARIA SLAVE
0009	29019211	RESISTENZA SCALDANTE ADESIVA
0010	06245111-01ZNC	LAMIERA SUPP RESISTENZA SCALDANTE
0011	06245010	PH ASS. RESIST. SCALD.
0012	06044811-01	PIASTRINA AZIONAMENTO INTERR
0013	06222511-01ZNC	BVM 671 CPU board support
0014	21083611	VISTA M/L horizontal glass fixing
0015	06293412	ASSIEME CARTER SUPERIORE PUSH
0016	05389911	CARTER LATERALE PUSH IN PLASTICA
0017	06301311P77	COPERTURA PEM SPORTELO ARIA SL.
0018	23052826	TUBO LED ø16mm - ARDITI L= 790
0019	08040111	GUARNIZIONE MAGNETICA ARIA M SLAVE
0020	21086911	VISTA M/L horizontal glass fixing
0021	21087411	VISTA M/L horizontal glass fixing
0022	21087311	VISTA M/L horizontal glass fixing
0023	06294511ZNC	CARTER INFERIORE PUSH
0024	17388611	POLISTIROLO CARTER INFERIORE PORTA
0025	06295511ZNC	BV676 SLAVE silver product exit assy
0026	12016116-01	DRAWER WHEEL PIN
0027	01768211-03	BVM975 LOCK HOOK
0028	19054421	BOCCOLA X RIVETTO Ø12
0029	33050476	Steel rivet 3,2x6
0030	22239212	CABL. 24V PORTA ARIA SLAVE M L

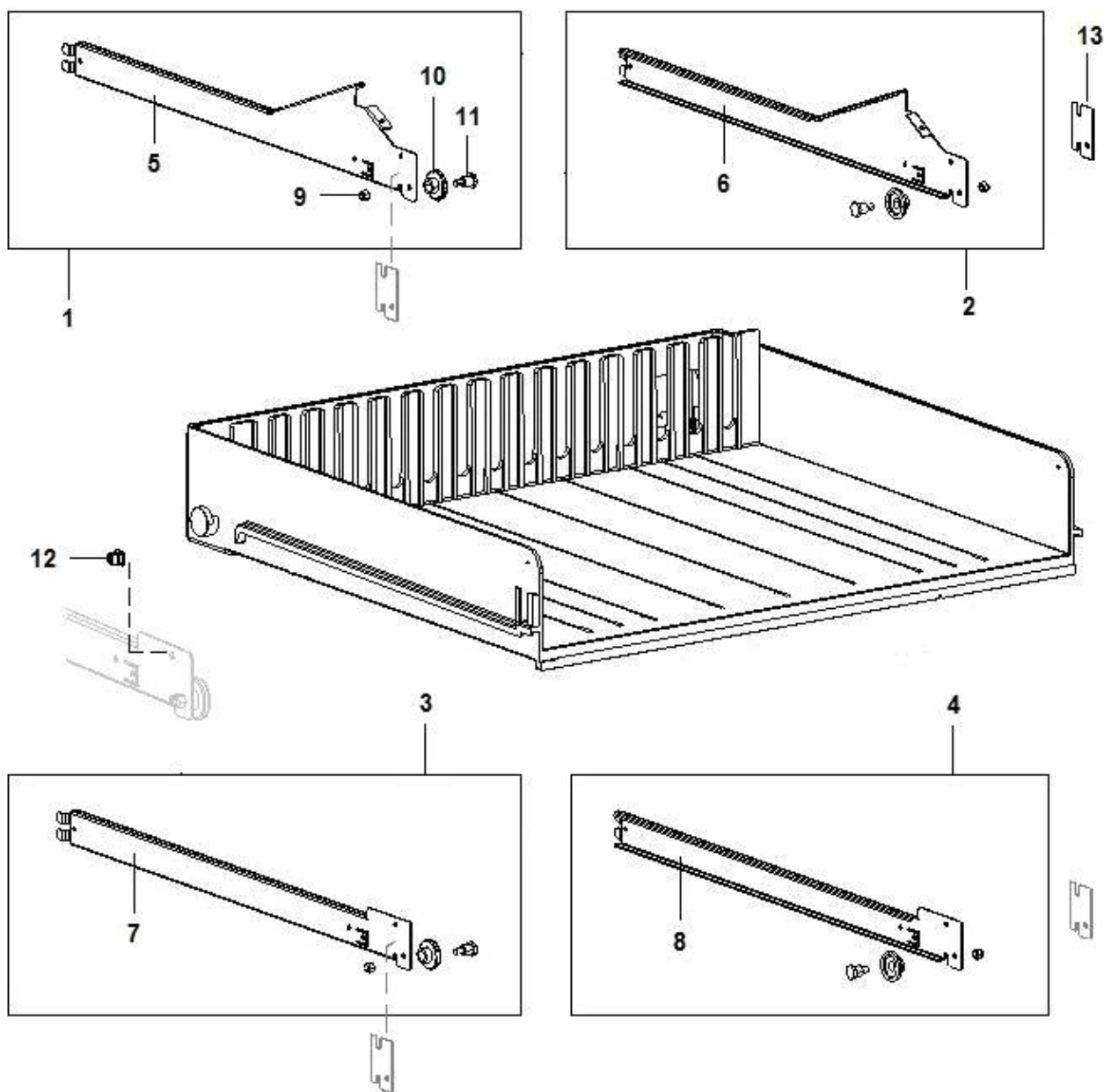
PUSH ARIA SLAVE DOOR ASSEMBLY (1924)

PUSH ARIA SLAVE DOOR ASSEMBLY (1924)

Pos.	Code	Description
0001	06293712	BV676 SLAVE silver product exit assy
0002	05115635	Push door V850 black
0003	37001216	Ø 7 snap ring
0004	05136315	bush for vega delivery panel
0005	06293811P77	SUPPORTO PUSH ARIA SLAVE
0006	12016011	product door rod
0007	09110016-01	TUBO PTFE 6x4 CALIBRATO Pmax 68BAR #
0008	19041811L	5ma female knob
0009	37001016	snap ring
0010	06294912L77	ASSIEME LEVA PUSH DX
0011	06294812L77	ASSIEME LEVA PUSH SX
0012	33050496	RIVETTO 3,2X8 ACC-ACC
0013	19054411	rivet bush
0014	01554611	door lever L-18 V600
0015	19142511	rivet bush
0016	35155316	flat washer D. 5,3*10*1 ZN
0017	34110316	Self-locking nut 5MA
0018	24024516	MAGNETE PLASTO-FERRIT.500X20X2
0019	06300911ZNC	CONTROPANNELLO USCITA PRODOTTO
0020	08012213	gasket 25x8
0021	06293911P77	PANNELLO ANTIFURTO ARIA SLAVE
0022	12062711	Vega 680 antitheft panel rod



Pos.	Code	Description
0001	06295622P77	ASS.CASSONE ARIA M SLAVE
0002	26026376	net filter quick connection with cable
0003	06289911ZNC	DEFLETTORE POSTERIORE ARIA SLAVE
0004	01468421-02	spacer for Vega cabinet
0005	05325715M09	SCATOLA CONNETTORI MASTER SLAVE
0006	03255111-03	FAZZOLETTO PASSACAVO BV672
0007	06289711ZNC	GRIGLIA POSTERIORE ARIA SLAVE
0008	05301915-01M54	CHIAVE DI SERVIZIO BLU P5405
0009	26016726	safety switch
0010	06257812	PH ASS.LAMIERA SUPPORTO INTERRUETTORE
0011	06219312-01P77	BV685 IVS skirting board band
0012	12016511	jack pin
0013	05114211	Vega door jack cylinder
0014	21057212	foot.assy (m10x40) - -bvm971
0015	06083121ZNC	BVM 671 CPU board support
0016	06413811ZNC	STAFFA BATTUTA CENTR. ARIA M+
0017	03262112-01	PH ASS.SCAT.LIV.CHIUS.SCH.BV676LX
0018	01712311	DEFLETTORE VANO CASS.V700LUX3B
0019	19051316	pin
0020	37000416	snap ring
0021	23052116	PRESSACAVO RICHCO HMCC-3-01
0022	22197422	Vista Master Module cable L= 2500MM
0023	22203112	VEGA A-B conversion cable
0024	22203022	CABL.PREDISP.TRASF.VEGA A-B



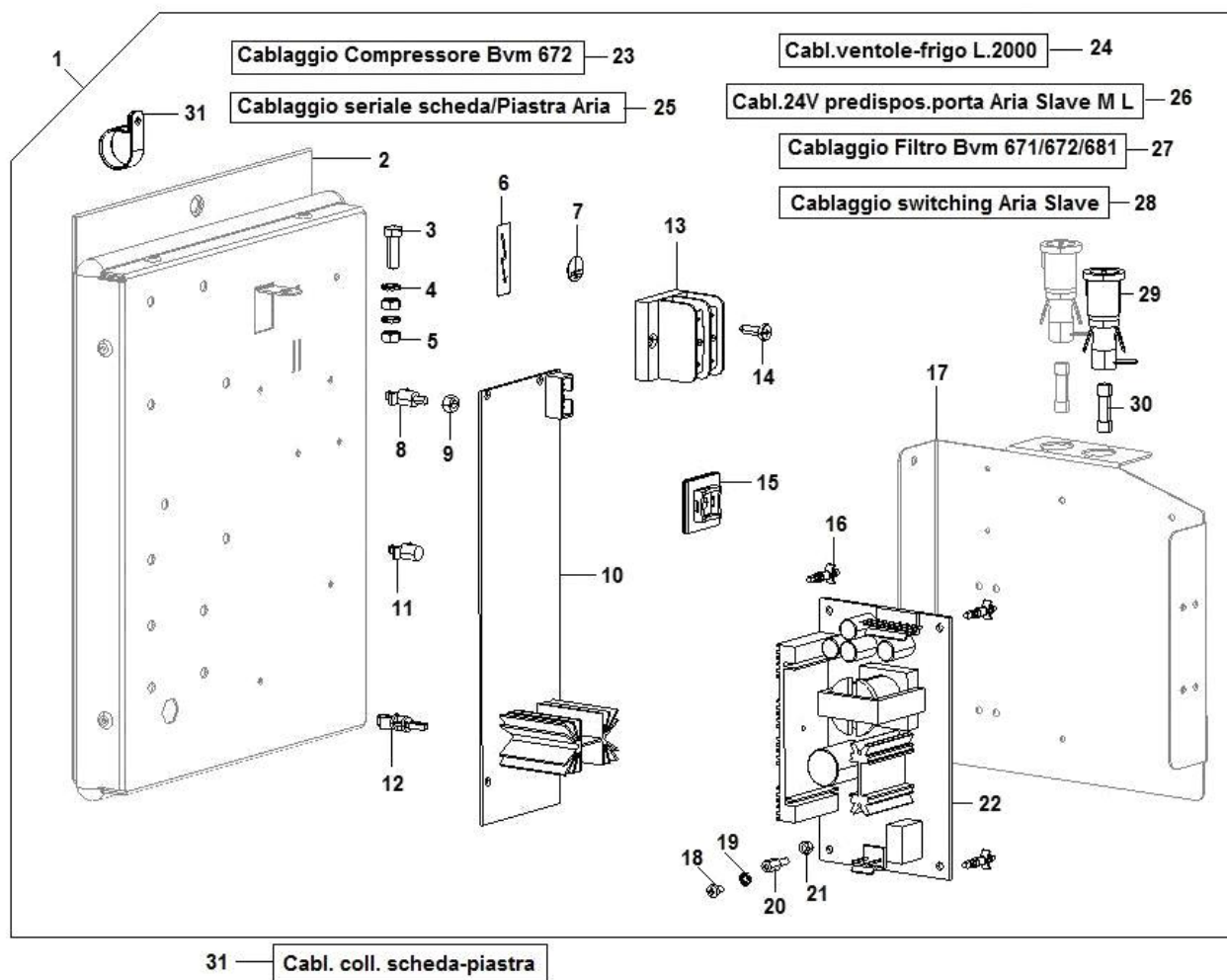
Pos.	Code	Description
0001	06025440	PH ASS.GUIDA RECL.SX BV676/85 3°
0002	06025540	PH ASS.GUIDA RECL.DX BV676/85 3°
0003	06025430	ASS.GUIDA NON RECL.SX BV676/85
0004	06025530	BV676/86 RT non tilting guide assy
0005	01472221	BV676/85IVS left tilting guide
0006	01472021	BV676/85IVS right tilting guide ass.
0007	01471321	left non-tilting guideBV676/85
0008	01471721	right no-tilting guideBV676/85
0009	34110316	Self-locking nut 5MA
0010	05116416	vega drawer wheel
0011	12016116-01	DRAWER WHEEL PIN
0012	33085716	card spacer
0013	01615711	Guide plate V-700 Lux

Diagram illustrating the assembly of a refrigerator unit, showing various components and their assembly order:

- 1: Main refrigerator unit (cabinet and internal components).
- 2: Top panel (cover).
- 3: Condenser coils (rear).
- 4: Condenser coils (front).
- 5: Top panel (cover).
- 6: Screws for top panel.
- 7: Screws for top panel.
- 8: Temperature sensor assembly (Ass. sonda temp. refrigerazione).
- 9: Temperature sensor cable (Cavo collegam. sonda).
- 10: Temperature sensor cable connector.
- 11: Bottom panel (cover).
- 12: Bottom panel (cover).
- 13: Bottom panel (cover).
- 14: Bottom panel (cover).

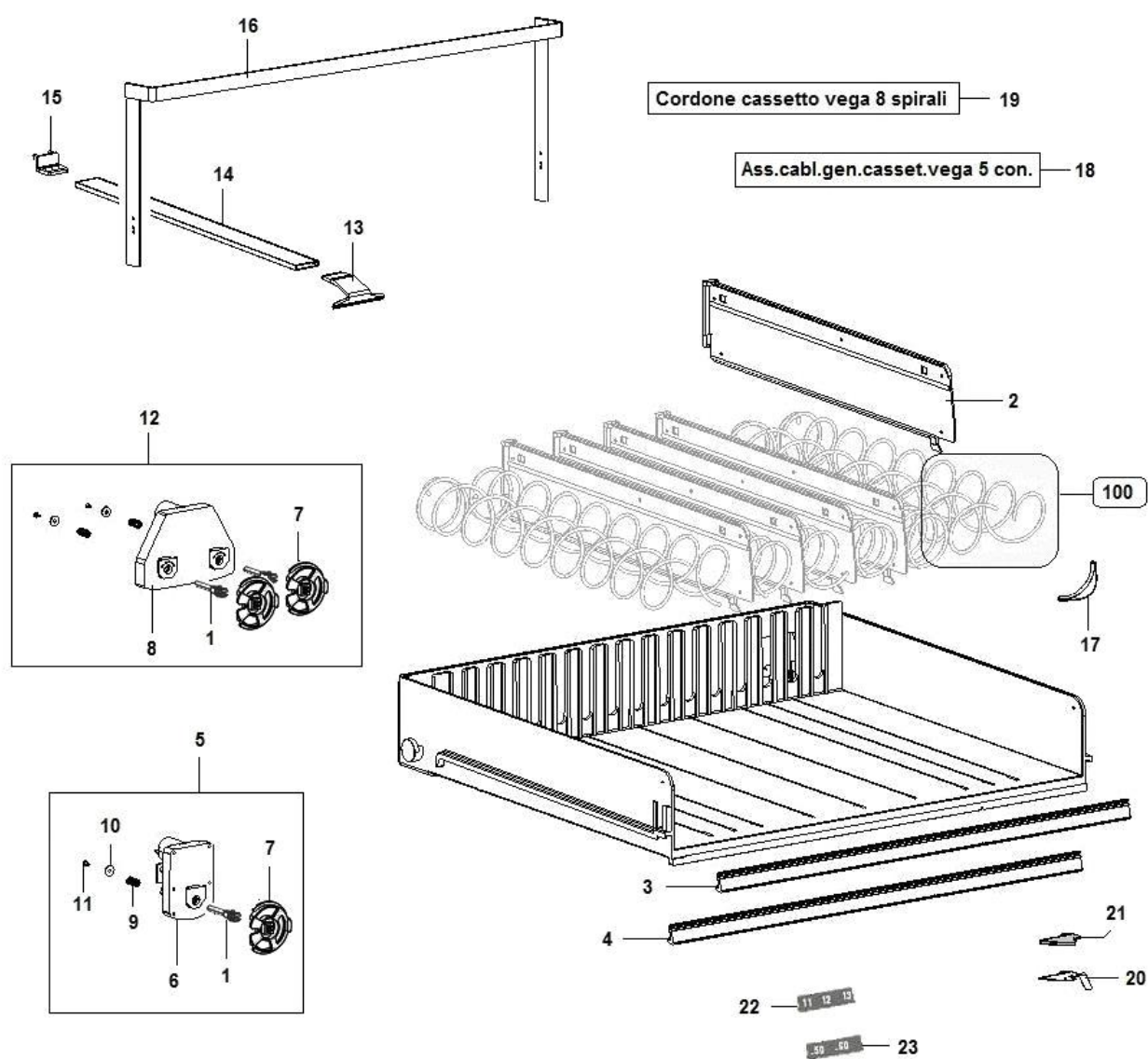
Pos.	Code	Description
0001	90017310-03	BV676LX 3° 230V-50Hz cooling unit
0002	03261422	BV676LX 3° fan assy
0003	20050216	TRIAL TAS.36 tangential fan
0004	06296711ZNC	DEFLETTORE PER VENTOLA TANGENZ.
0005	03261521ZNC	BV676LX 3° fan support
0006	32050416	M4x8 screw
0007	30053411-01	iris voltage safety stiker
0008	06303111ZNC	CARTER VENTIL. TANG. ARIA SLAVE
0009	32227256	VITE AFIL.TCC S/PDIN 7981 C15 3,9X9,5ZB
0010	21057816	Quick-closing 50mm
0011	05130315-03M09	VASCH.R-CONDENSA NERA VEGA
0012	06322711ZNC	LAMIERA FERMO VASCH. ARIA SLAVE
0013	09087843-02	7x11 brown silicone pipe
0014	07020511-01	magnet spring
0015	26077612	Cooling temp. probe assy
0016	22131712	boiler probe cable

ARIA SLAVE ELECTRIC BOX ASSEMBLY (1928)



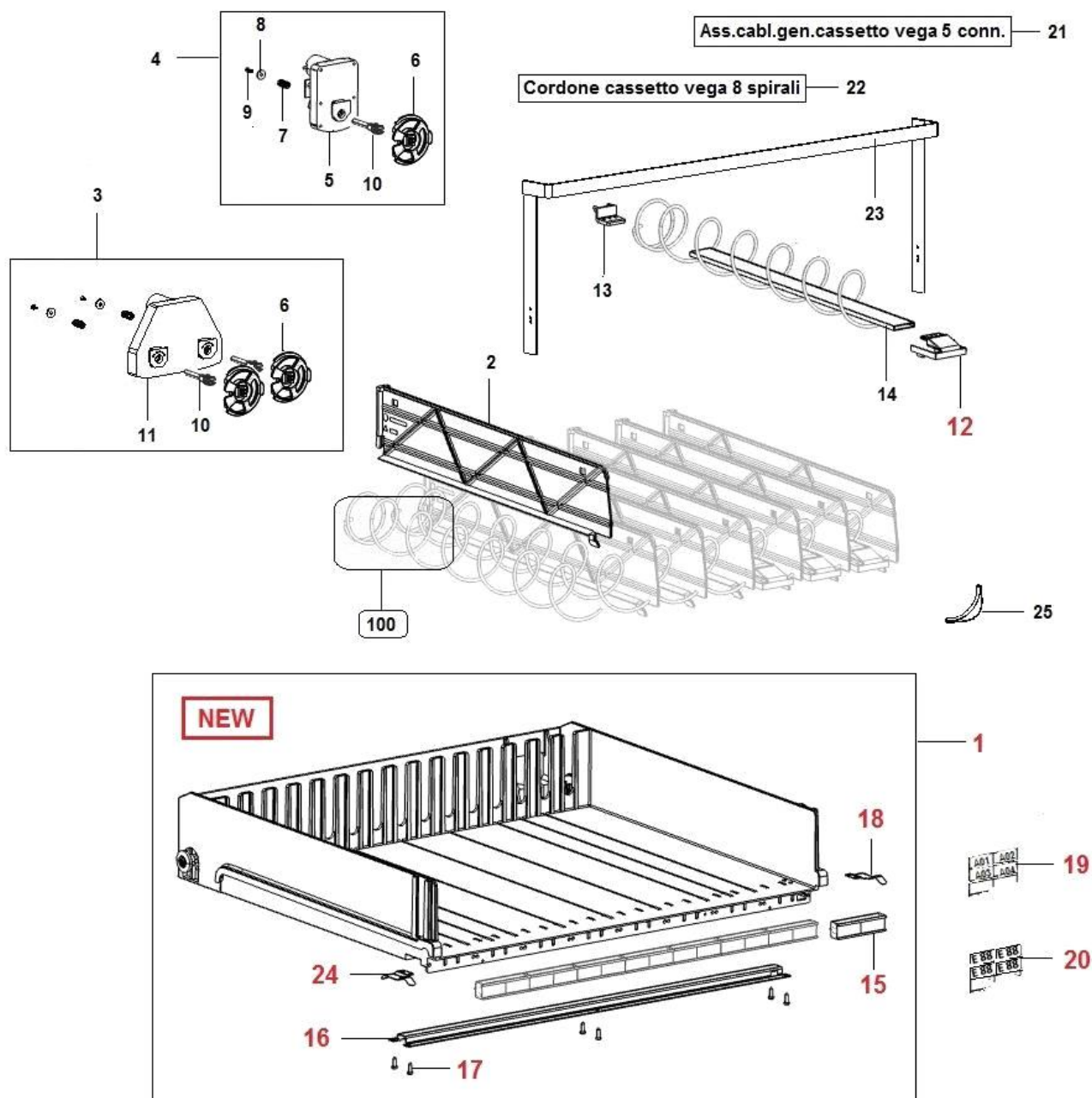


Pos.	Code	Description
0001	94047310CL	C/O CENTRALINA ARIA SLAVE
0002	06290112	PH ASS. CENTRALINA ARIA SLAVE
0003	32090526	screw T.E. M5x16
0004	35160416	self-locking washer diam.
0005	34102926	5MA hex. brass nut
0006	30053411-01	iris voltage safety stiker
0007	30077911	ground plate pegaso
0008	33065526	L= 10 card spacer
0009	33065726	4M nut for board spacer
0010	26027526	power board SMTcold MIC 256
0011	33065116	power board supp.spacer
0012	05195216	board spacer
0013	23038816	BVM plugs assy
0014	32222956	3.9x13 self-threading screw
0015	05199516	adhesive base
0016	33072046	PLASTIC SPACER M/F M3 L. 7,9
0017	06290311ZNC	BV676LX 3° fan support
0018	32025216	Cross headed screw 3MAX6
0019	35160216	self-locking diam. 3.2
0020	33071926	Metal spacer M/F/ M3L.
0021	34110116	3MA selft-locking nut
0022	43000120	ALIM.SW.ROHS 65W 230/110Vac24V C/CAVO
0023	22233112	CABL.COMPRESSORE BV672/682
0024	22209522	CABL.VENTOLE-FRIGO L.2000
0025	22197232	Board/plate serial cable
0026	22233222	CABL.24V PREDISPOS.PORTA ARIA SLAVE M L
0027	22228312	CABLAGGIO FILTRO/INTER/FUS.BV671/672/681
0028	22228232	CABL.SWITCHING ARIA M L SLAVE
0029	23017316	6.3x32 snap-type fuse holder
0030	23014916	10 Amp. fuse
0031	22197212	Board-plate cable



Pos.	Code	Description
0001	05111116-01	shaft for vega gearmotor
0002	05340911M09	LEI200 waste slide
0003	21014211A02	Black V850/7LUX aluminium label holder
0004	21014311A02	V850/7LUX stamped label holder
0005	20017510-01CL	ASS.MOTORIDUTTORE SPIRALI
0006	20016016	gearmotor
0007	05123915-01	drawer wheel pin
0008	20017616	vega spiral motor
0009	07018611	vega motor shaft spring
0010	35168616	plain washer
0011	32222826	2.9x9.5 self-tapping screw
0012	20017910-01CL	ASS.MOTORIDUTTORE DOPPIA SPIRALE
0013	05127715	bottles support forward
0014	21012811L24	bottles vertical support
0015	05127815	bottles support backward
0016	01578840	V700LUX bottle guide assy
0017	05116516	ejector for spiral
0018	22186810	Vega 5col.drawer gen.cable
0019	22105612	drawer cable
0020	07034111	Stop tray spring
0021	05241211	Stop tray spring thickness
0022	30071621	Vega A-B selection numb.labels
0023	30093311	price labels (Euro)

NUOVO CASSETTO PLS - PARTI A COMPLETAMENTO (2886)



Pos.	Code	Description
0001	05382120-01M09RC	ASS.CASSET.PLS BASE ETICH.8 SPIR BOT.
0002	05340911M09	LEI200 waste slide
0003	20017910-01CL	ASS.MOTORIDUTTORE DOPPIA SPIRALE
0004	20017510-01CL	ASS.MOTORIDUTTORE SPIRALI
0005	20016016	gearmotor
0006	05123915-01	drawer wheel pin
0007	07018611	vega motor shaft spring
0008	35168616	plain washer
0009	32222826	2.9x9.5 self-tapping screw
0010	05111116-01	shaft for vega gearmotor
0011	20017616	vega spiral motor
0012	05360315M09	PONTE SUPPORTO LATTINE/BOTTIGLIE
0013	05127815	bottles support backward
0014	21012811L24	bottles vertical support
0015	05360515M09	SUPPORTO ETICHETTE CASSETTO PLS
0016	06446811-02ZNC	OMEGA RINFORZO CASSETTO
0017	32010746	VITE AFIL.TCC PHC15 UNI9707 4X10ZB
0018	06447011-01INX	MOLLA FERMA CASSETTO DX
0019	30071641-01	Vega A-B selection numb.labels
0020	30071651-01	Vega A-B selection numb.labels
0021	22186810	Vega 5col.drawer gen.cable
0022	22105612	drawer cable
0023	01578840	V700LUX bottle guide assy
0024	06447711-01INX	MOLLA FERMA CASSETTO SX
0025	05116516	ejector for spiral